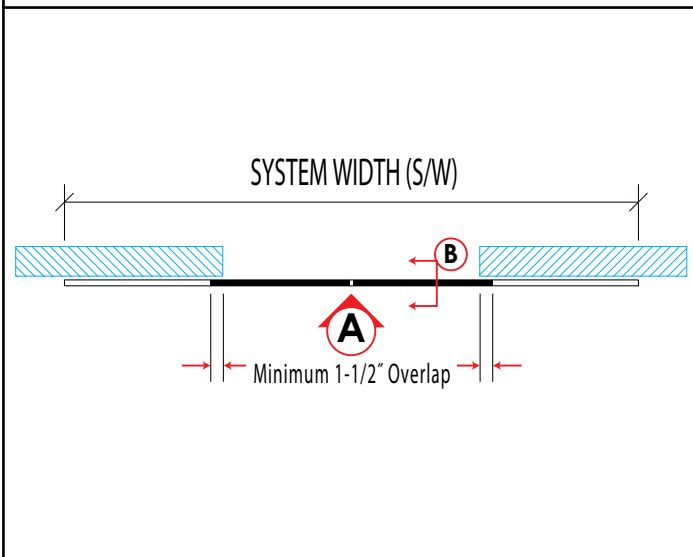
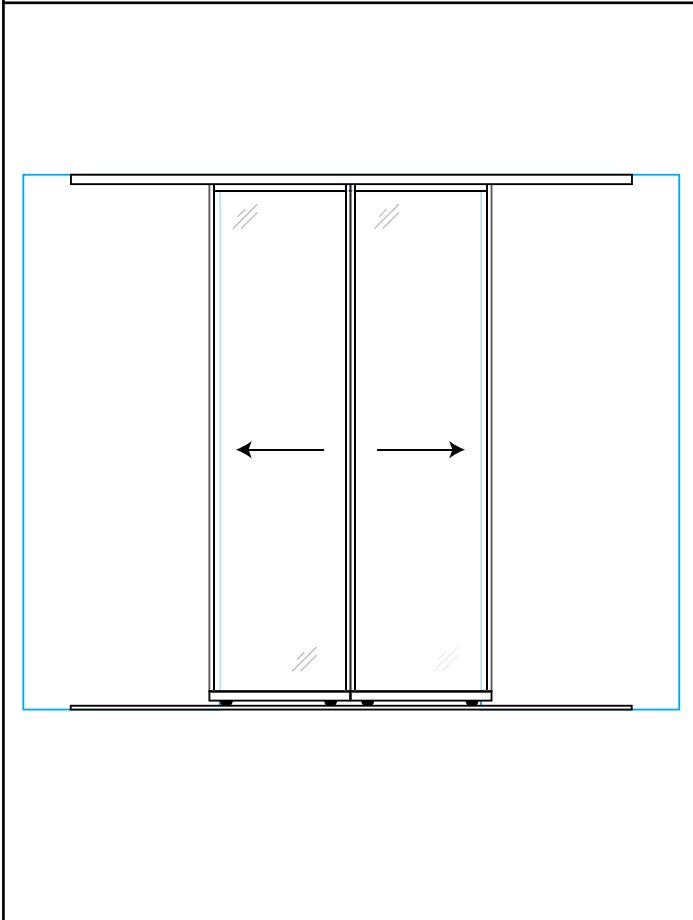


**PLAN 2**



**ELEVATION A**



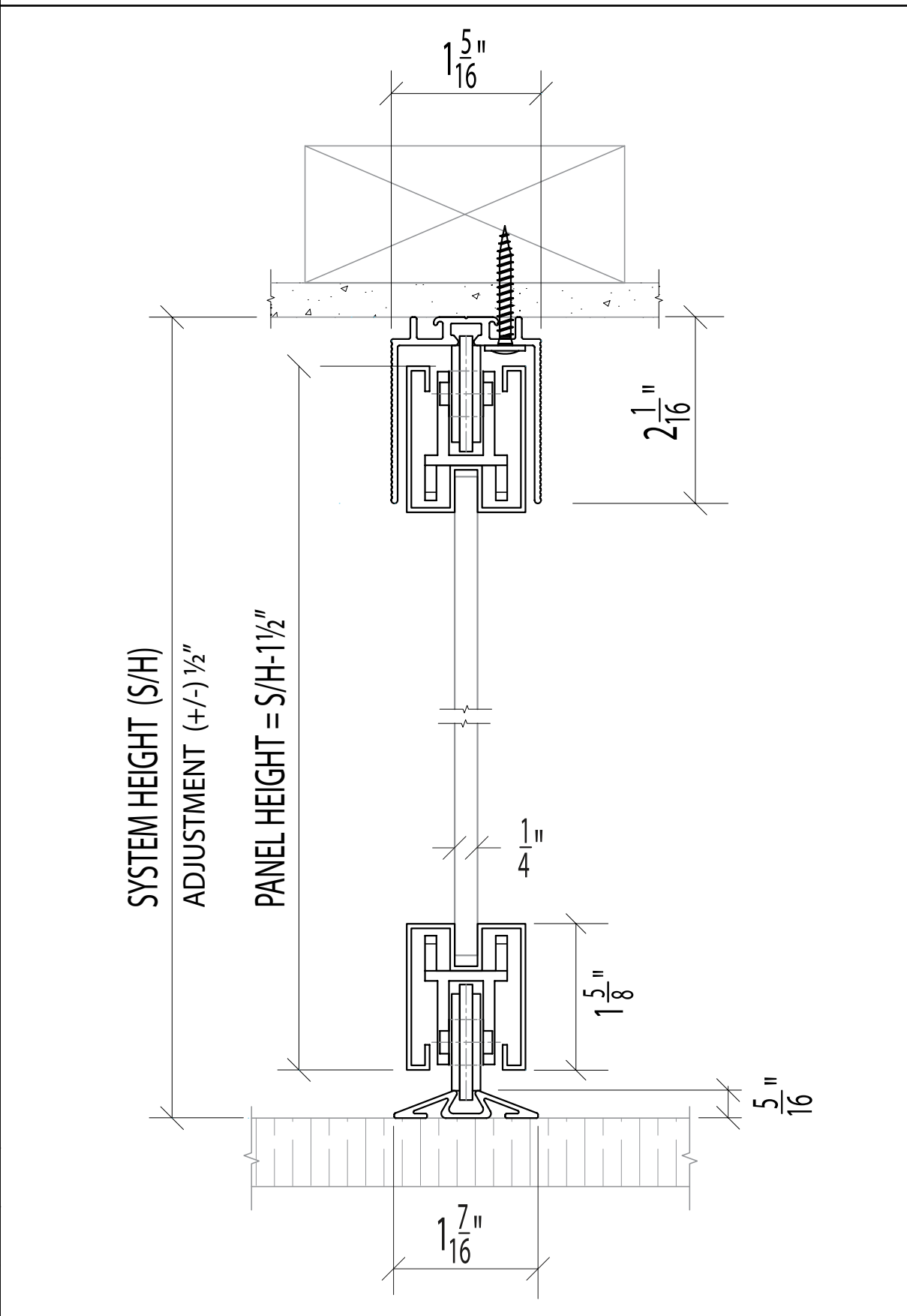
**PROJECT:**

**ARCHITECT:**

**ALLIANCE GLASS DOORS INC.**  
 Surrey, BC, Canada, V3W 1A2  
**T: 604.501.2588**  
**F: 604.501.1608**

**Riviera**  
 rivieraglassdividers.com

**SECTION B**



**SAVONA Sx-SCS**  
 Single Track - Ceiling Mount - Surface Floor Track

**SHEET:**

**JOB #:**

**OPTIONAL PARTS**

CUSHION CAPTURE ROLLER ASSEMBLY (SHOWN WITH SINGLE TOP TRACK)

BLACK ANODIZED FINISH

END CAP

TRACK STOP

**SYSTEM PARTS**

**SINGLE TOP TRACK**

**SINGLE SURFACE TRACK**

DIFFUSED WHITE LAMI GLASS  
 CLEAR LAMINATED GLASS  
 MIRROR  
 PREFINISHED HARDBOARD  
 MIRROR / HARDBOARD

**STANDARD INSERTS**

LOCK  
 EDGE PULL

**SYSTEM 214**

2-1/4" WIDE STILE

**SYSTEM 214**

**DRAWN BY:** JL

**DATE:** 07/22/17

**CHECKED BY:** DL

PLEASE NOTE: "x" in the product code refers to the stile options - Standard LINE = "T"; SYSTEM 214 = "214"